

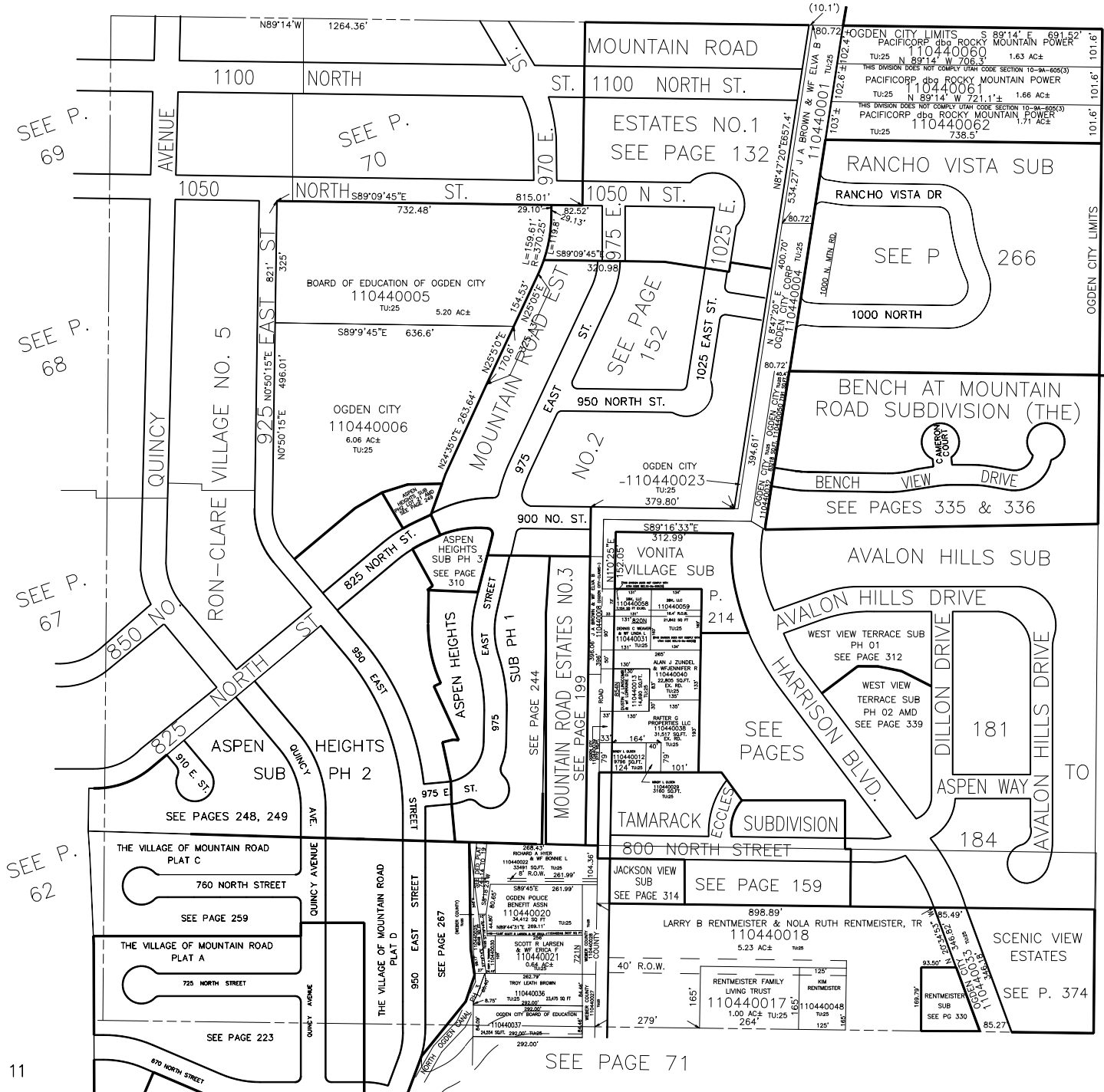
N.E. 1/4 OF SECTION 9, T.6N., R.1W., S.L.B. & M.

IN OGDEN CITY & WEBER COUNTY

TAXING UNIT: 23, 25

SCALE 1" = 200'

SEE PAGE 5



SEE P. 69

SEE P. 68

SEE P. 67

SEE P. 62

11

OGDEN CITY LIMITS

OGDEN CITY LIMITS

TO

OGDEN CITY LIMITS

SEE PAGE 84